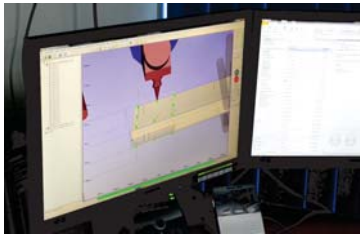




The future is better than you think



WITH KWIKSURE PARTNERING YOUR NEXT BUILDING PROJECT
IT'S AS EASY AS A-B-C



Covered Walkways



PATENTED Steel Building System utilises emerging 'Laser Cutting Tube Technology'
The laser cut joints ensure unparalleled accuracy over traditional fabrication processes.



Shade Shelters



Engineering

- Less weight per length translates to cost savings
- Greater design properties in both axis (moment of inertia, section modulus and radius of gyration)
- High resistance to torsional loading
- Suited for compression column applications
- Diversity of strength, formability, toughness and corrosion resistance
- Wide variety of shapes and wall thicknesses are available

BENEFITS OF KWIKSURE

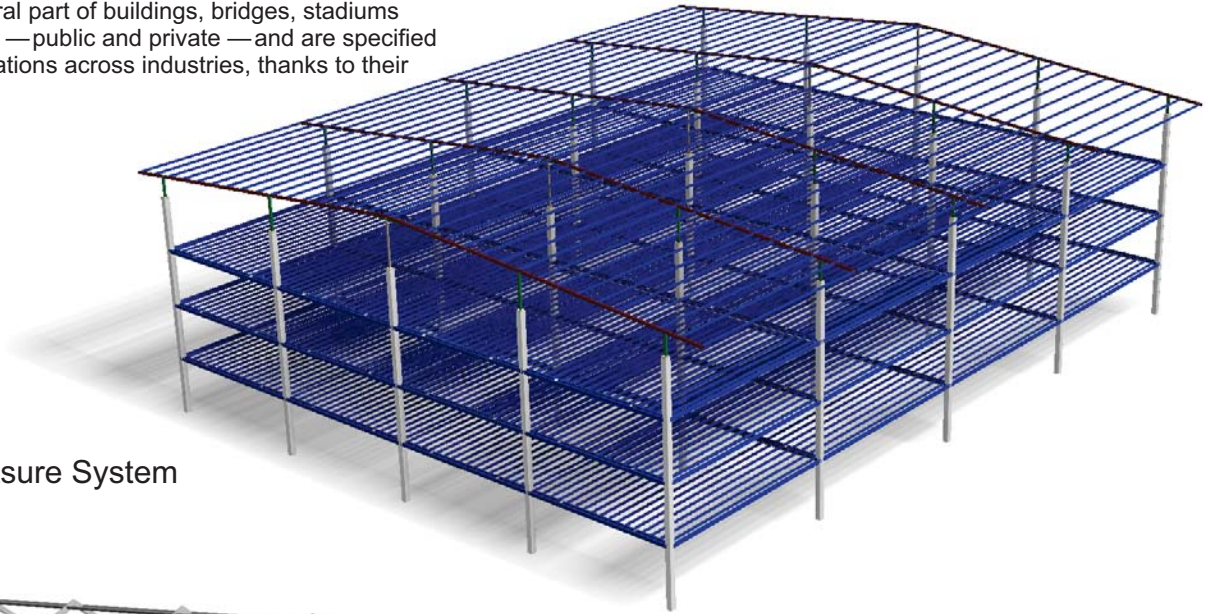
- **Safety:** KWIKSURE frame has no sharp edges like all C Sections have. This is particularly important if you have children running in and out of your building and for barns used for horses or livestock.
- **Savings:** KWIKSURE reduces the cost to the fabricator over the traditional manufacturing processes.
- **Accuracy and Quality** of the KWIKSURE system over common used PEB building systems.
- **Strength:** KWIKSURE is made from RHS Rectangular Hollow Section. This is structural steel and is much stronger than C Section
- **Environmental Conditions:** Use of RHS (closed) sections where the environmental applications demand closed sections to prevent retention of hazardous materials or moisture as with the case of coal washing plants.



System available in Orrcon Steel's innovative MAXI-TUBE ® ZM275 zinc alloy coating for great durability in corrosive environments.

HOLLOW STRUCTURAL SECTIONS (HSS):

Today's leading fabricators, designers and engineers continue to find new, inspired uses for hollow structural sections (HSS). HSS are already an integral part of buildings, bridges, stadiums and structures of all kinds —public and private —and are specified more and more for applications across industries, thanks to their many benefits.

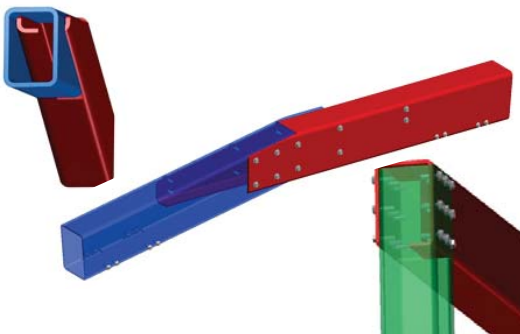


4 Storey Kwiksure System



Classroom frames

- Like **FLAT PACKED FURNITURE**, the components come pre-prepared with all the holes marked and drilled, etc to specification **SAVING BUILD TIME!**



Through a national network of business units we are able to offer a broad range of integrated solutions tailored to the suit all projects.

Time Saving Designs

- Pre-designed Buildings, Covered Learning Areas and Walkways flat packed with all components ready for assembly on site.

Design & Technical Support

- Vast experience in material and product design utilising steel and related materials available to support specific projects.

Value Add

- Patented framing system using RHS tube to reduce costs of supply and assembly time.
- Reduced waste through access to customised lengths direct from the Mill.

Stock On-Hand

- Stock holding of pre-designed elements of the system ensure that products are available when required on site.

Paul Cooper

KWIKSURE BUILDING SYSTEM

<https://youtu.be/CCKSJLLkMzc>

Mob +61 423 050 845

Ph +61 7 3459 1224

PO Box 7531

Redland Bay Queensland 4165

Australia



**To assist you with your next build
contact Paul Cooper 0423050845
Email: paul@sidc.com.au
The future is better than you think**

